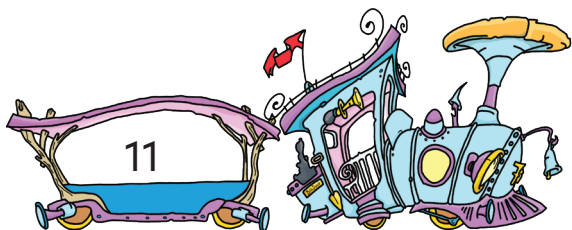


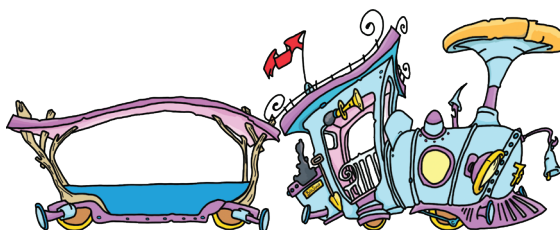
Ou'd oew spoor?

Tel mee! Stap in de tullepetrain...
Optellen en aftrekken tot 20

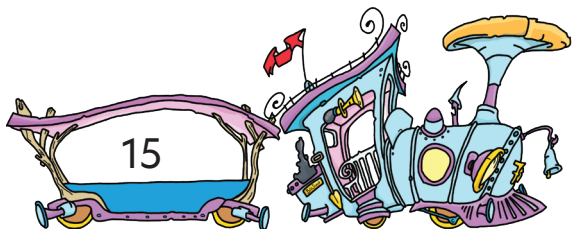
Station
Meulestraat



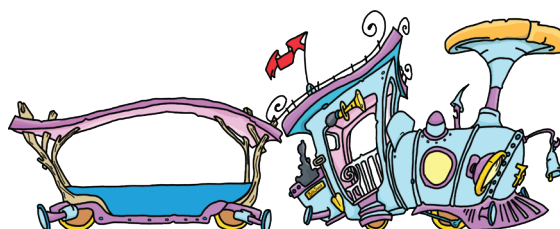
Station
de Kaai
- 3



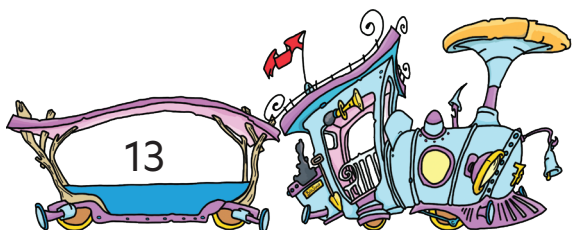
Station
Meulestraat



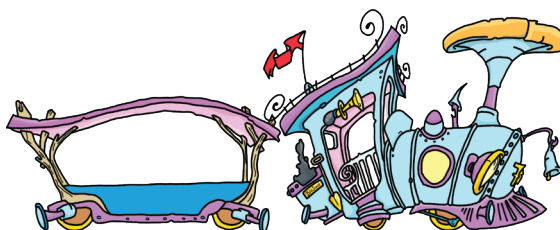
Station
de Kaai
- 6



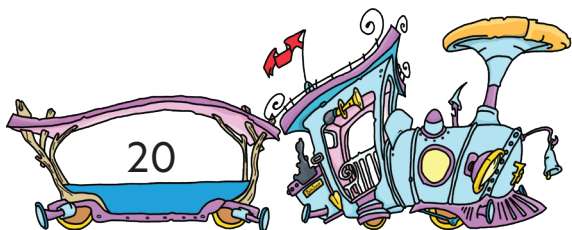
Station
Meulestraat



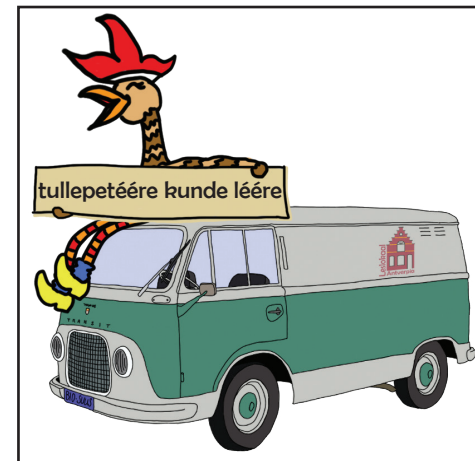
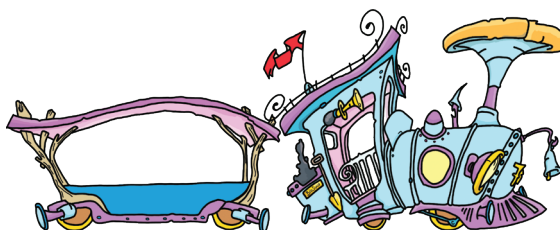
Station
de Kaai
+ 4



Station
Meulestraat



Station
de Kaai
- 9



De tullepetrain rijdt vanaf de Meulestraat naar de Kaai!
Bij iedere halte stappen kienders in (+) of uit (-).
Weet jij hoeveel kienders met de tullepetrain bij de Kaai aankomen?
Zet het goede getal in de wagon!