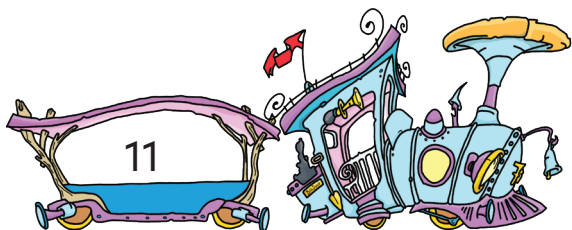


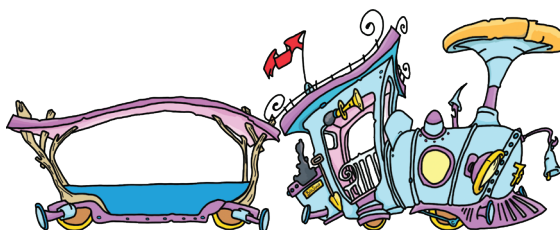
Ou'd oew spoor?

Tel mee! Stap in de tullepetrein...
Optellen tot 20

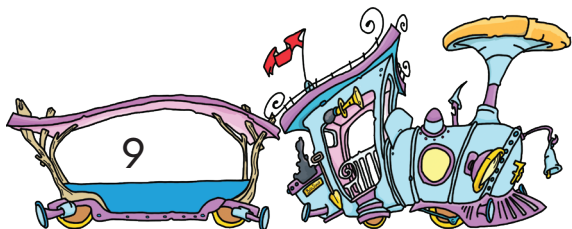
Station
Meulestraat



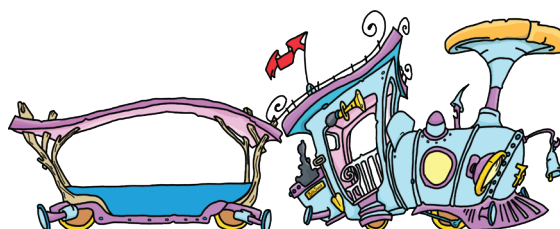
Station
de Kaai
+ 3



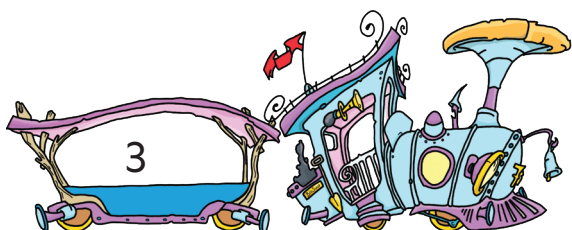
Station
Meulestraat



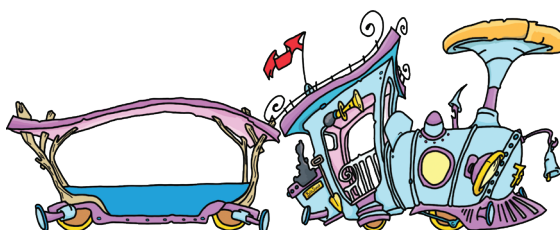
Station
de Kaai
+ 6



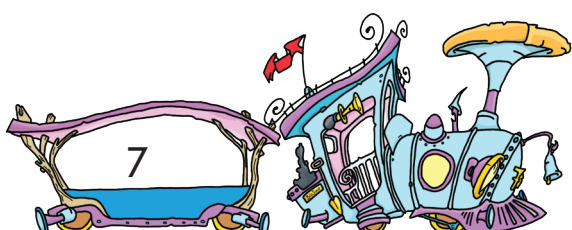
Station
Meulestraat



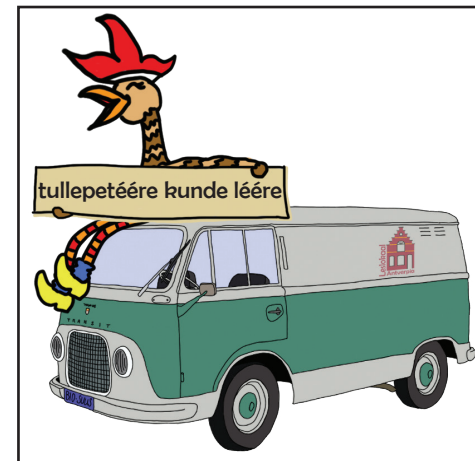
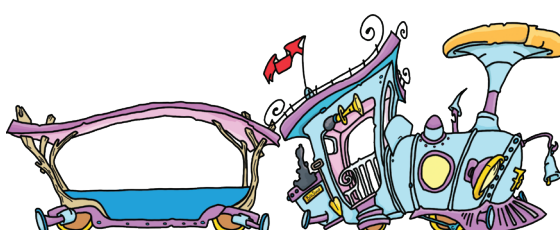
Station
de Kaai
+ 14



Station
Meulestraat



Station
de Kaai
+ 4



De tullepetrein rijdt vanaf de Meulestraat naar de Kaai!
Bij iedere halte stappen kienders in (+) of uit (-).
Weet jij hoeveel kienders met de tullepetrein bij de Kaai aankomen?
Zet het goede getal in de wagon!