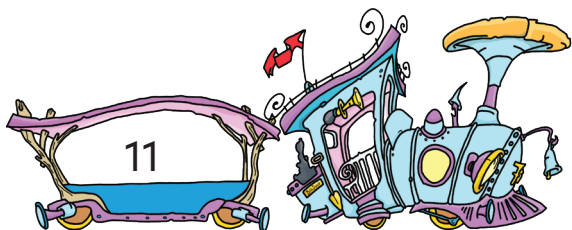


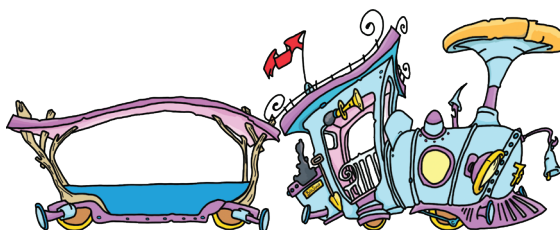
Ou'd oew spoor?

Tel mee! Stap in de tullepetrein...

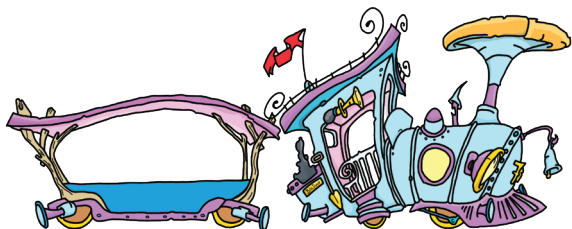
Station
Meulestraat



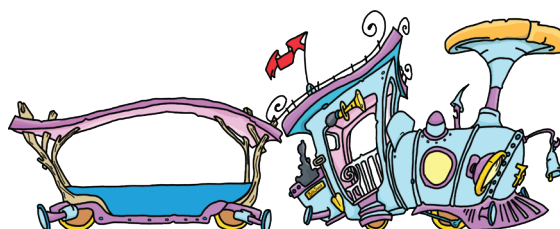
halte 1:
Pirresplein
+ 11



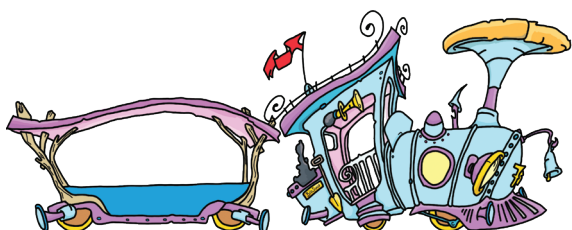
halte 2:
Mart
- 18



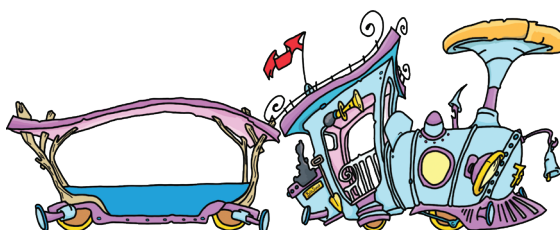
halte 3:
Sint Jan
+ 5



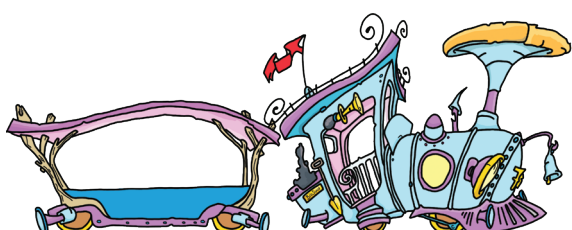
halte 4:
Raod'uis
+ 14



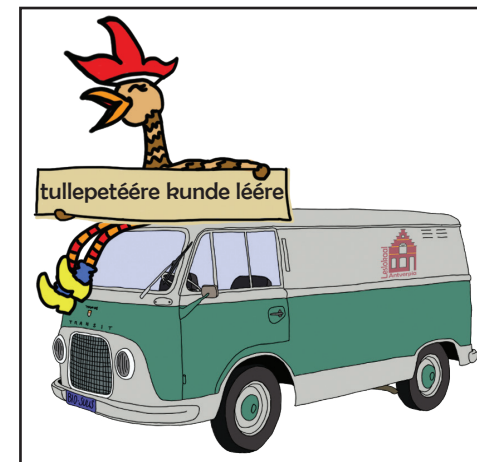
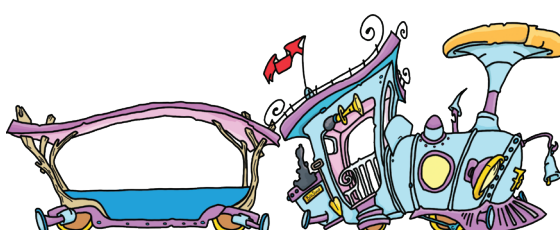
halte 5:
Tullepetaon
- 7



halte 6:
de Schuive
+ 16



Station
de Kaai
- 21



De tullepetrein rijdt vanaf de Meulestraat naar de Kaai!
Bij iedere halte stappen kienders in (+) of uit (-).
Weet jij hoeveel kienders met de tullepetrein bij de Kaai aankomen?
Zet het goede getal in de wagon!