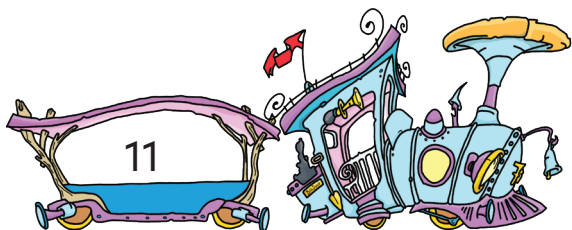


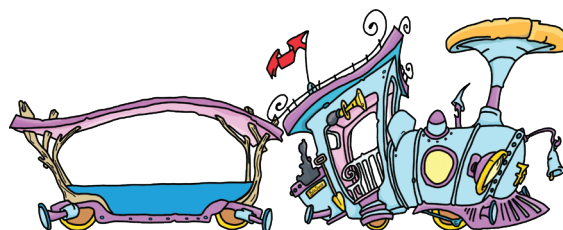
Ou'd oew spoor?

Tel mee! Stap in de tullepetrein...

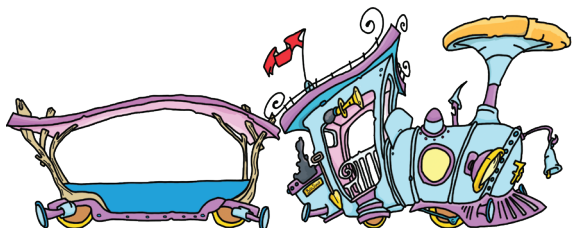
Station
Meulestraat



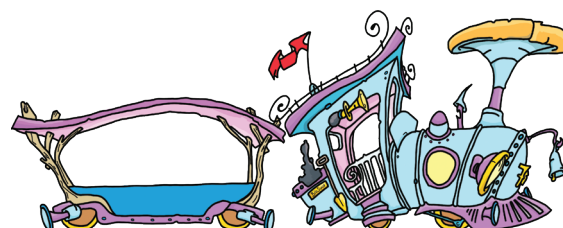
halte 1:
Pirresplein
+ 4



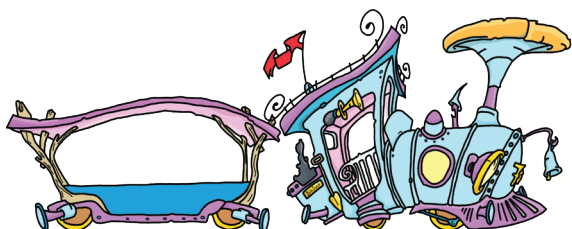
halte 2:
Mart
- 5



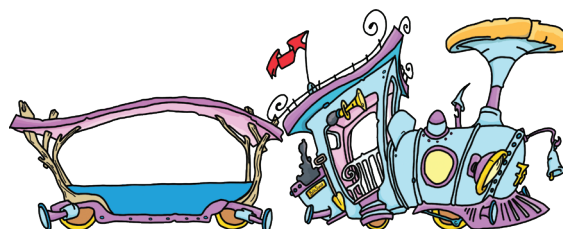
halte 3:
Sint Jan
+ 6



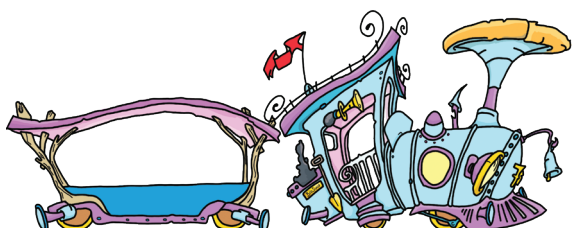
halte 4:
Raad'uis
+ 4



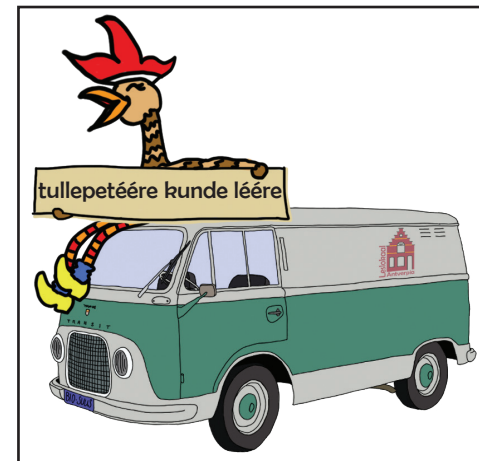
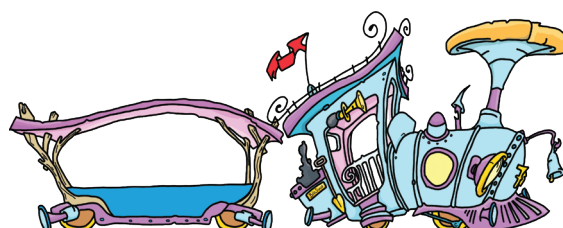
halte 5:
Tullepetaon
+ 7



halte 6:
de Schuive
- 10



Station
de Kaai
- 6



De tullepetrein rijdt vanaf de Meulestraat naar de Kaai!
Bij iedere halte stappen kienders in (+) of uit (-).
Weet jij hoeveel kienders met de tullepetrein bij de Kaai aankomen?
Zet het goede getal in de wagen!